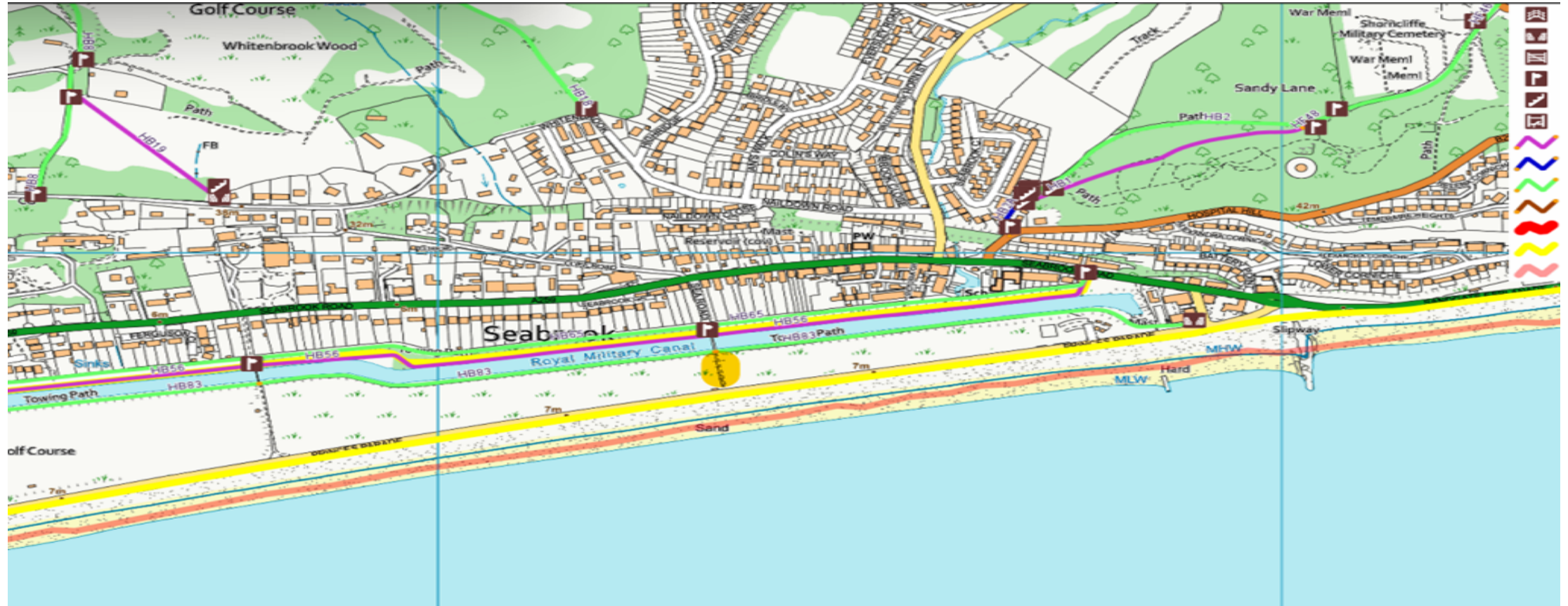


OSC update

Closure of Footpath South of Seaview Bridge

Princes Parade Project

Current Path Location



Background

- The pathway South of Sea view Bridge facilitates a pedestrian access from Seabrook Road to Princes Parade.
- For some residents of Seabrook Road and Cliff Road it is the most direct and convenient pedestrian access.
- As part of the BAM construction management plan the closure of the path South of Seaview Bridge is required.
- Kent County Council have granted a permit for the temporary closure.

Legal Status



KENT COUNTY COUNCIL

**Seaview Bridge Footpath, Hythe
(PROHIBITION OF PEDESTRIANS)
THE ROAD TRAFFIC REGULATION ACT 1984
TEMPORARY ORDER 2022**

To allow the placement of hoarding, Kent County Council has made an Order to temporarily prohibit pedestrian traffic on Seaview Bridge footpath.

A closure is planned from 11th July 2022, with estimated completion by 11th January 2024, or where stated on a valid Permit (GE10049980378-01 - Kent County Council). The scheduled dates may vary for these works with appropriate signage displayed on site and the works will be displayed on [One.Network](#)

Seaview Bridge footpath will be closed south of Seaview Bridge to Princes Parade.

The alternative route is via College Bridge.

For information regarding this closure please contact Folkestone & Hythe District Council.



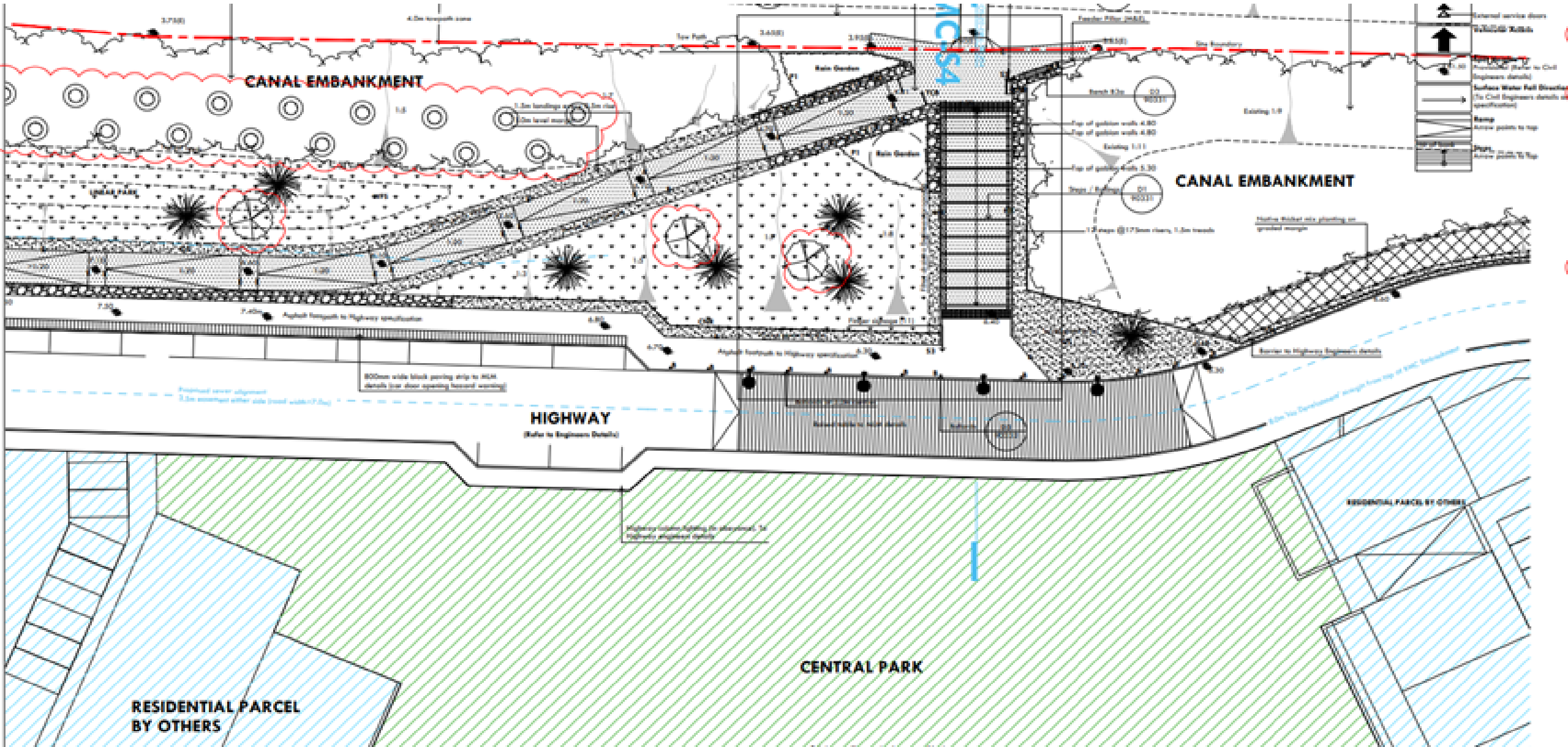
Works necessitating Temporary Closure Order

- The path will be closed from when works commence (was 31 October 2022 –January 2024)
- The path will be within the main construction site.
- Construction vehicles will be crossing the site on a frequent basis
- Construction operations including changing and reprofiling of ground levels will be taking place.
- The operations and excavations on site will destroy the delineation of the current path

Why is the closure necessary?

- To ensure the health and safety of the public and especially children when site works involving large scale plant and machinery are in operation.
- To ensure that the construction management plan agreed by BAM can be adhered to.)
- When the road is completed there will be a partial route to the roadside and across – the drawings in the next slide show the position when the road has been built.
- The road is elevated relative to the current position with steps or a ramp provided to access to its edge.

Completed Works



Suggested alternative option

- The project team have been employed because of their vast experience on these types of projects, they are entrusted to look at the best possible options and the closure is what they have advised.
- There is an alternative safe option available. The walking time from the Bridge to the alternate shortest route at College Bridge is six minutes.

Alternative Routes



Summary

- We regret the inconvenience to local residents necessitated by the closure of the footpath
- It is F&HDC's view that the health and safety of the public must be the primary consideration.
- The ground levels and path delineation will be changed and temporarily obliterated.
- There is no practical safe means to retain the path during the construction works.
- The petition has been considered. The closure must be implemented when works commence.

Questions?